



UNIT G03  
*gateway series*

1 Bedroom, 1 Bath, 765 SF

- FULL HOTEL AMENITIES AND CONCIERGE SERVICES AVAILABLE
- EXPANSIVE OPERABLE WINDOWS FRAMING VIEWS OF THE HISTORIC GATEWAY NEIGHBORHOOD
- FULLY INSULATED WALLS WITH ENHANCED THERMAL AND ACOUSTICAL VALUES
- OPEN PLANS WITH CONNECTED KITCHEN AND LIVING AREAS
- LUXURIOUS FINISHES WITH A WARM, NEUTRAL COLOR PALETTE
- DISTINCT ENTRYWAYS WITH WALNUT DOORS AND STONE THRESHOLDS
- COMPLETE LED LIGHTING PACKAGE
- KITCHENS WITH EUROPEAN STYLE WALNUT CABINETS, GRANITE COUNTERTOPS, MOSAIC SLATE BACKSPASHES, KOHLER FAUCETS, UNDERCABINET LIGHTING AND PREMIUM KITCHENAID STAINLESS STEEL APPLIANCES
- BATHROOMS WITH EUROPEAN STYLE VANITIES, GRANITE COUNTERTOPS, LARGE MIRRORS, SHOWERS WITH TILED BASINS AND WALLS, TOTO TOILETS AND KOHLER FAUCETS AND SINKS
- WALK-IN CLOSETS WITH PREMIUM HARDWARE AND SHELVING
- HIGH-EFFICIENCY HVAC, HOT WATER TANK AND WASHER / DRYER IN-SUITE

DOWNTOWN CLEVELAND  
2000 EAST NINTH STREET  
CLEVELAND, OHIO 44115

[THESCHOFIELDRESIDENCES.COM](http://THESCHOFIELDRESIDENCES.COM)

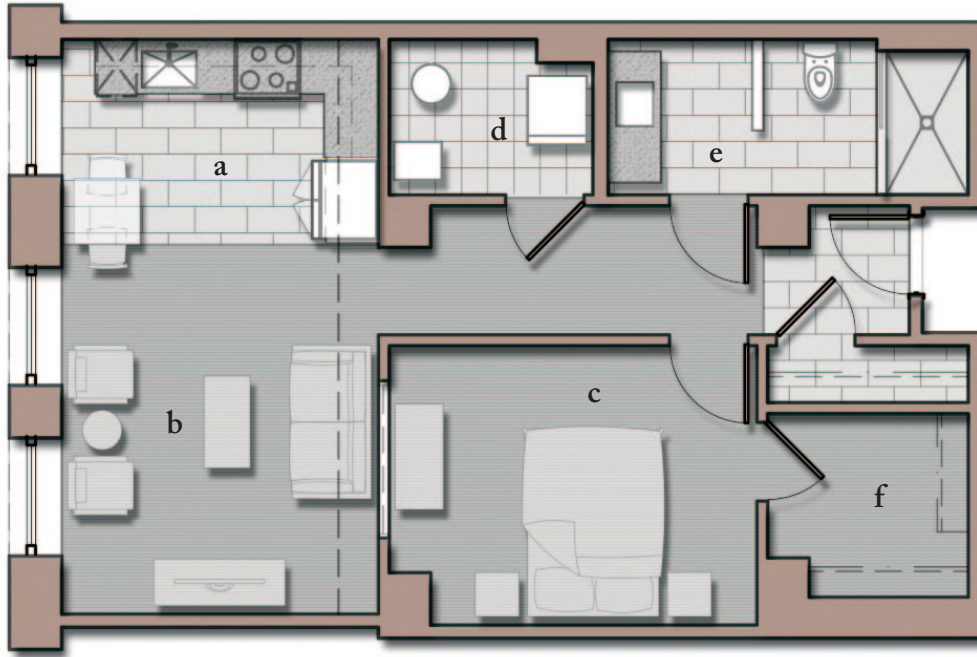


THE  
SCHOFIELD  
RESIDENCES

## UNITS

803, 903, 1003, 1103, 1203, 1303, 1403

1 Bedroom, 1 Bath, 765 SF



a) KITCHEN 7.5' x 12'

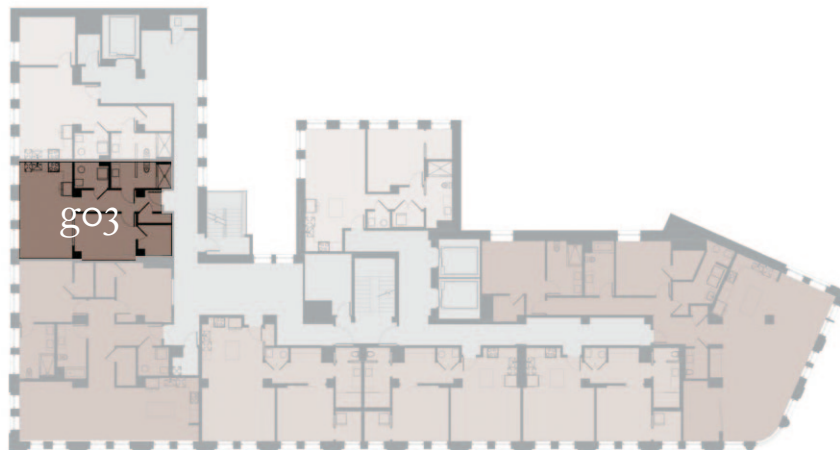
b) LIVING SPACE 14' x 12'

c) BEDROOM 10.5' x 14'

d) LAUNDRY 6' x 7.5'

e) BATHROOM 6' x 13.5'

f) WIC 7' x 7.5'



NORTH →